

GS LED Slit Lamp MW50D

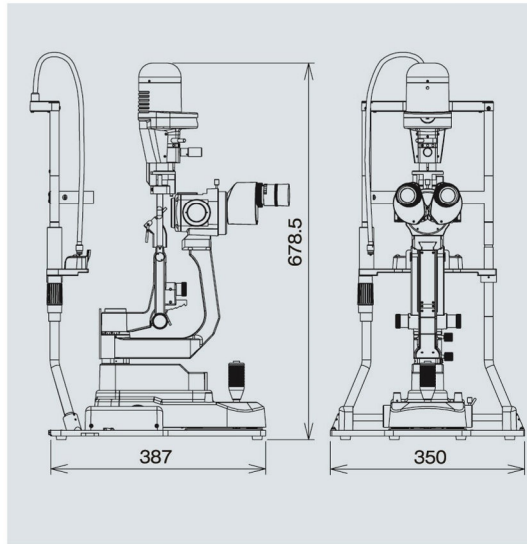
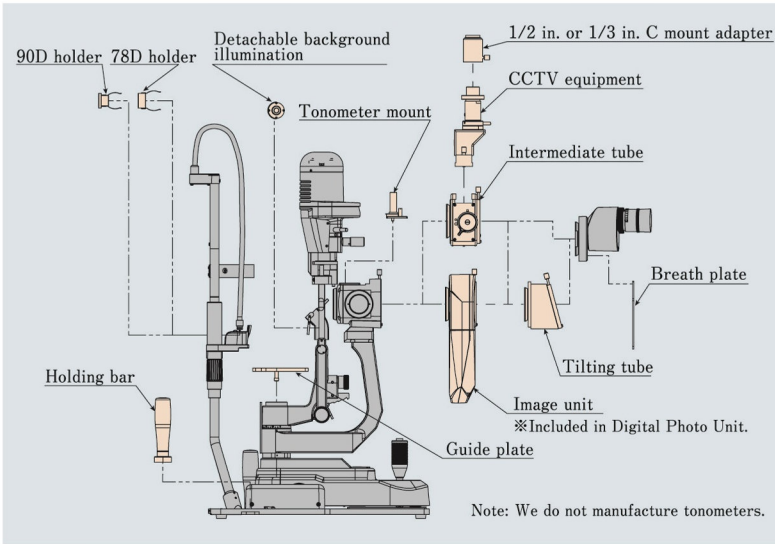
LED SLIT LAMP

5x & 50x Become the Standard

NEW GS LED Slit Lamp MW50D

Optional Accessories

Overall Dimension



Specification

Main body

Microscope	Type	Drum-type 5-step magnification (Angle of inclination:13.2°)
	Eyepiece magnification	12.5x
	Total magnification	5x, 10x, 16x, 25x, 50x
	Field of view	φ44.5, φ22.3, φ14.2, φ9.0, φ4.5
	Eyepiece diopter adjustment range	-8D to +8D
	PD adjustment range	55 mm to 80 mm
	Working distance	100.5 mm
	Reaching distance	314.0 mm
Illumination system	Light source	5W white LED
	Slit width	0 mm to 16 mm continuously variable
	Slit rotation angle	90° to right and left
	Slit length	φ0.2,1,2.5,10,14,16mm, 1 to 12mm continuously variable
	Slit vertical angle	0°, 5°, 10°, 15°, 20° from lower angle
	Slit tilting width	8 mm to right and left from target surface
Filters	Fully transparent, ND (12.5% reduction), green, blue	
Arm unit	Rotation angle	90° to right and left
Cross slide table	Horizontal movement	100 × 110 mm (joystick operation)
	Vertical movement	30 mm (joystick rotation)
Weight	Main body	13 kg (without digital unit) 13.8 kg (with digital unit)
	Dimensions	350 (W) × 678.5 (H) × 387 (D) mm

● Specifications and design are subject to change without prior notice for improvement.
● The color of instrument on the catalogue and the real product might be different.

Digital camera

CCD	1/2.5" CMOS
Resolution	2592×1944 (5M px)
Video image output	HD 1296×972 pixels
Frame rate	30 fps
Interface	USB3.0
Power supply	Input: 5V, Power consumption: 3W
Weight	790 g
Dimensions	107 (W) × 227 (H) × 55 (D) mm

Power unit

Input	AC100V - 240V 50/60Hz
Output	DC12V / 3.75A (max.)
Power consumption	35VA
Weight	450 g
Dimensions	105 (W) × 48.5 (H) × 130 (D) mm

System requirement for GS MW File

System	OS	Windows® 7, 8.1, 10 / 64 bit
	CPU	Intel Core i5, 1.5 GHz or more
	Memory	2 GB or more
	Interface	USB3.0 (1 port or more), or USB2.0 (1 port or more)
	Monitor resolution	1366×768 pixels or more
Data format	Optical drive	DVD/CD drive
	Still image	JPEG
	Movie	AVI

CAUTION For the proper and safety use, please read the Instruction Manual thoroughly before using the product.

RIGHT MFG. CO., LTD.
Ophthalmic Sales
1-47-3, Maeno-cho, Itabashi-ku, Tokyo 174-8633, Japan



SHIGIYA
SHIGIYA MACHINERY WORKS LTD.
GS Division <http://www.GrandSeiko.com>
5378 Minoshima, Fukuyama, Hiroshima, 721-8575 Japan
Tel.+81-84-981-5735 Fax.+81-84-953-6758

● Agency

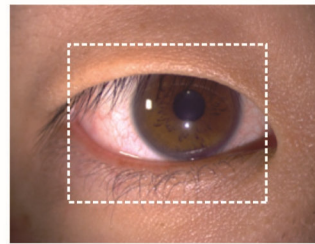


SHIGIYA
<http://GrandSeiko.com>

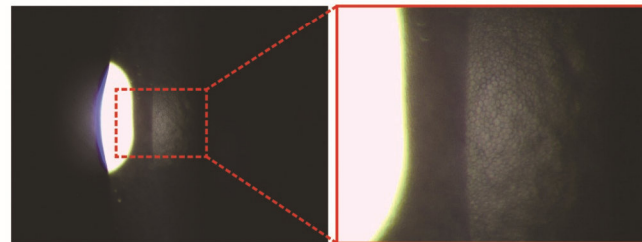
Unique Magnification Range, 5x, 10x, 16x, 25x, 50x with Fine Optics.

Revolutionary combined magnification, 5x, 10x, 16x, 25x, 50x

All optics for observation is multi-coated for clear and high-resolution images. Additionally, the optical system is designed to show the bright image even at 50x magnification.



Outside is 5x and inside the white dot is 6x (approximate image)



50x endothelium

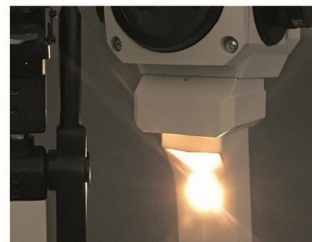
Built-in Barrier Filter

Yellow Filter is readily available just by sliding the lever as it is built-in for the additional contrast to fluorescence images.

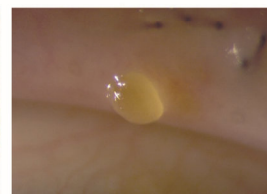


Background Illumination

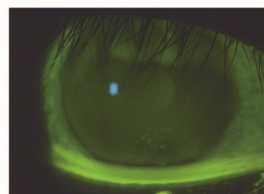
Background illumination is standard option and easy to adjust the brightness by turning the illumination knob. For more flexible lighting position, detachable one is available as an optional accessory.



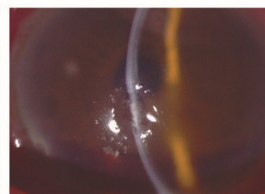
16x meibomian gland



50x meibomian gland



Fluorescence image



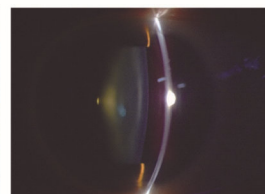
Cornea (background illumination on)



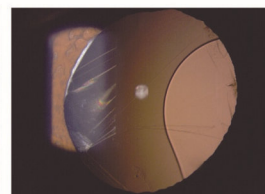
Iris (diffuse illumination)



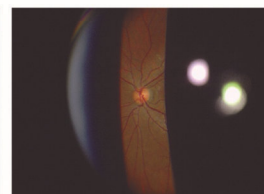
Iris (tangential illumination)



Crystalline lens



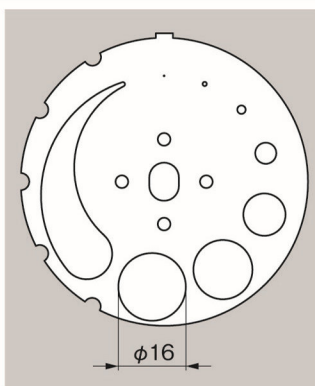
Transillumination



Disk (with 90D lens)

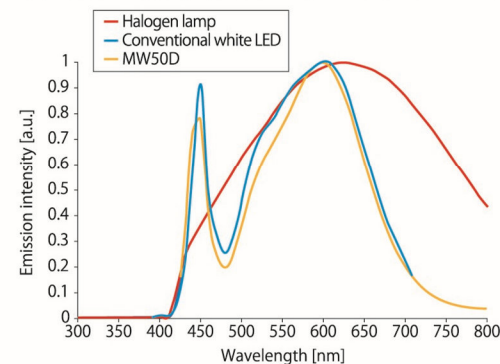
Long Slit Length of 16mm

In addition to the regular Slit Length of 0.2mm/1mm/2mm/5mm/10mm/14mm, 16mm is also available for the observation of wider view. Of course, the seamless adjustment between 0mm to 12mm is incorporated as well.



Optimal LED Light Source

LED light source is not just for a long lasting, energy saving light, but also minimizing the sense of discomfort for switching from halogen to LED. It provides bright, sharp, and homogeneous slit that are essential for proper and correct observation.



Digital Imaging System

Digital Camera

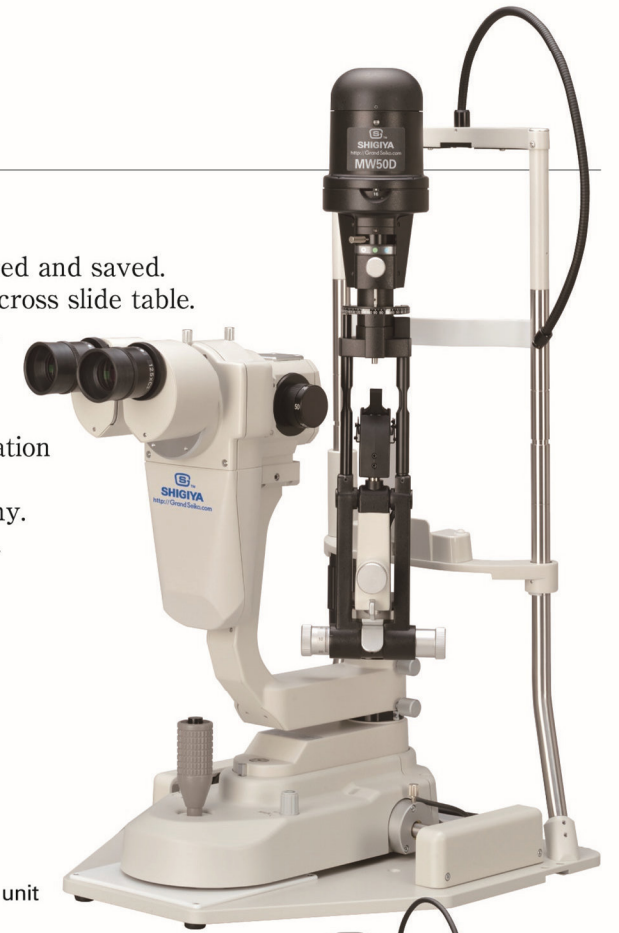
- 5M pixel for still image with the ideal color balance
- Just clicking joystick, both still image and movie are captured and saved.
- Automatically detects right and left with the movement of cross slide table.
- Beam-splitter ratio is 70% for camera and 30% for eyepiece.

Filing Software – GS MW File

- Simple and easy operation window
 - Burst Mode (5 pictures/shot) is available for easier confirmation
 - Able to read the barcode for the faster data input.
 - Able to take black and white multi-band fundus photography.
- ※For using GS MW File, Hardware Key (dongle) is required.



Digital photo unit



Clinical unit

15° Tilting Tube (Option)

15° tilting tube allows observation with a natural posture for different height users.



High Operability

Designing, Selection of Materials, and Manufacturing are carefully done in order to implement the stress-free smooth focus adjustment.



User Friendly Eyepiece Tube

Convergence type eyepiece tube is employed for easy fusion to enable the more efficient and the natural observation.

